

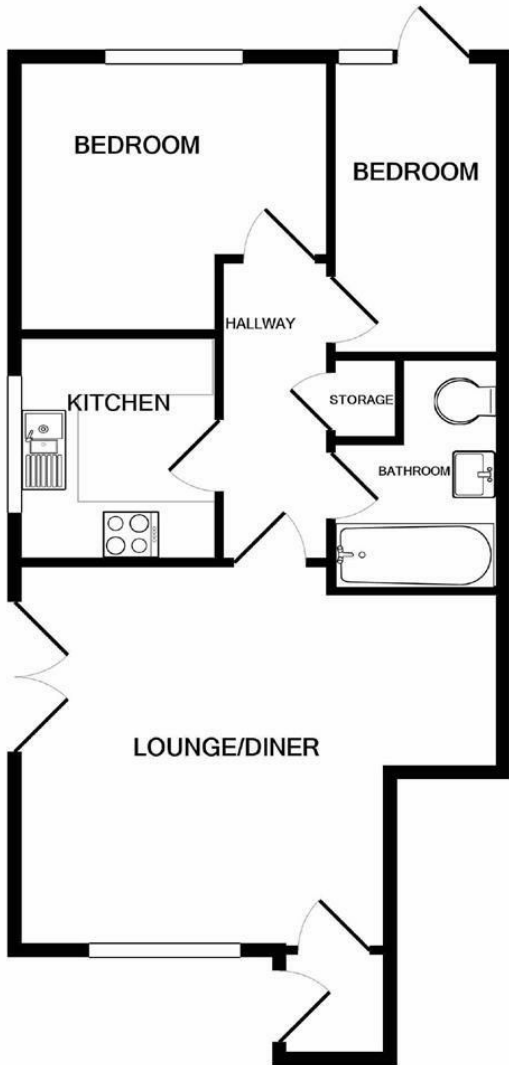


jordanfishwick

2 KENSINGTON COURT WILMSLOW SK9 5DA
PCM £995 PCM

2 KENSINGTON COURT WILMSLOW SK9 5DA

WILMSLOW - AVAILABLE END OCTOBER PART FURNISHED Attractive garden apartment located in central Wilmslow on a quiet cul de sac just off the high street. This two bedroom apartment has a sunny courtyard garden and allocated parking and is sure to appeal to the single professional or couple. Entrance porch lounge diner with patio doors, inner hallway leading to modern fitted kitchen with gas hob and electric oven, washing machine and fridge freezer, bathroom with shower over bath, double bedroom and single bedroom/office with door to rear courtyard garden. VIEWING RECOMMENDED Contact Wilmslow 01625 536300 £995.00pcm



Measurements are approximate. Not to scale. Illustrative purposes only
Made with Metropix ©2020



Energy Efficiency Rating		
	Current	Potential
Very energy efficient - lower running costs		
(92 plus) A		
(81-91) B	76	77
(69-80) C		
(55-68) D		
(39-54) E		
(21-38) F		
(1-20) G		
Not energy efficient - higher running costs		
England & Wales	EU Directive 2002/91/EC	